



ME SERIES

METAL EMBOSSER 1000 - 2000

ME1000 metal embosser



Manual input / output
Single Access Point

Emergency Stop

LCD display and front control panel
for technical diagnostics

FEATURES

standard



USED BY

- AUTOMOTIVE ASSEMBLY PLANTS
- SHIPYARDS
- STEEL PLANTS
- MILITARY
- MANUFACTURERS OF:
- WHITE GOODS
- MOTORS
- VALVES
- PUMPS
- LIFTS
- CRANES
- FIRE DOORS
- LOGGING INDUSTRIES
- LOGISTICS MANAGEMENT

THE BEST VALUE IN METAL PLATE MARKING BUILT FOR TOUGH WORKING ENVIRONMENTS

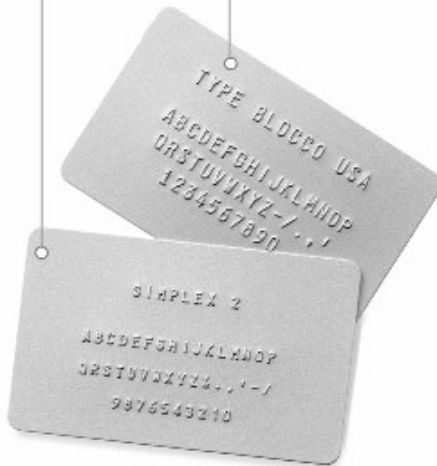
IDEAL FOR

- AUTOMOTIVE BODY & VIN PLATES
- MILITARY ID TAGS
- CABLE / HOSE TAGS
- INVENTORY / ASSET CONTROL & TRACKING TAGS FOR HARSH ENVIRONMENTS
- WORK IN PROGRESS & VIN PLATES
- TAGS FOR GALVANIZED OR HEAT-TREATED PROCESSES
- SERIAL NUMBER TAGS

Embossing type set

Simplex 350

BLOCCO USA
5MM 488



ME2000 metal embosser

Up to 250 plate
capacity hoppers:
input & output



SOFTWARE



INCLUDED



Addressing Machines & Supply Co. Inc

940 Virginia Ave

Indianapolis, IN 46203

e-mail: mberry@addressingmachines.com

TOLL FREE: 800-428-4595 FAX: 317-633-0528

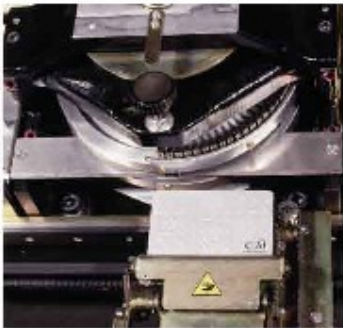
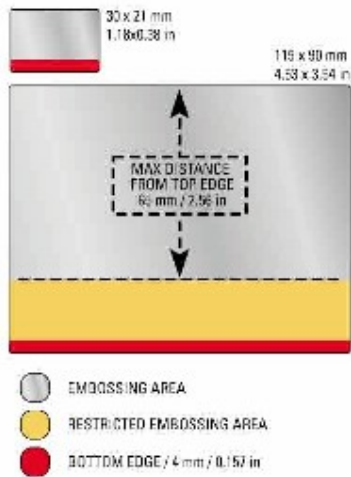
www.addressingmachines.com



ME SERIES

METAL EMBOSSER 1000 - 2000

Embossing area



TECHNICAL FEATURES

PLATE & FEEDER

dimensions	width: 30 ÷ 115 mm / 1.18 ÷ 4.53 in height: 21 ÷ 90 mm / 0.83 ÷ 3.54 in
thickness	0.4 ÷ 0.9 mm / 0.0157 ÷ 0.0354 in
materials	stainless steel, carbon steel, aluminium, copper, and brass
input hopper	ME1000: manual feed - Single Access Point ME2000: up to 250 plate capacity. (Ø 0,4 mm/0.0157 in)
output hopper	ME1000: manual feed ME2000: up to 250 plate capacity. Options: FIFO (first in – first out) technology or side eject

STAMPING

technology	Embossing, Indent or Debossing
drum capacity	60 or 90 slots - 45 slot drum available for special applications
type set	many character configurations available:
Embossing:	Simplex 2, OCRB1, Block USA, Double Block, etc. - Height 3 ÷ 12 mm / 0.118 ÷ 0.472 in
Indenting:	Simplex1, Simplex 2, etc. - Height 1 ÷ 4 mm / 0.039 ÷ 0.157 in
Debossing:	Elite Dog Tag
embossing area	from the top edge up to 65 mm / 2.56 in, leaving free 4 mm / 0.157 in at the bottom edge. Reversed character sets are available on request for embossing close to the bottom edge of the tag. Measurements are taken from the base of the character.
performance	1 plate in 18 sec. (55 characters)

COMMUNICATION INTERFACE & SOFTWARE

communication interface	RS232 serial port
protocol	CIM, Xon-Xoff, MultiEmbosser, Stored Format default, Stored Format Select and Pound-Pound
operating systems	Windows 2000/XP/Vista
application software	Sword PC application proprietary software compatible with automatic data field; plate archive; DBIII, DBIV, Excel, MS Access file compatibility; self diagnostics, automatic remake of rejected plates, resettable and non-resettable counters.
LCD Edit	via external keyboard; 20 storable formats downloadable
data format	50 fields of 42 characters each (Variable, Fixed data, Counters, etc.)

HARDWARE

power supply	100 - 117 - 220 - 230 or 240 Volts - 50 or 60 Hz
power consumption	800 W max
operating environment	temperature: 5 ÷ 40 °C / 41 ÷ 104 °F relative humidity: 30% ÷ 90% non condensing
dimensions (WxDxH)	ME1000/ME2000: 630 x 740 x 380 mm / 24.8 x 29.1 x 15 in
weight	ME1000 75 Kg / 165 lbs - ME2000 78 Kg / 172 lbs

VARIOUS

LCD display	2 lines by 40 character LCD display for diagnostic visualization and offline operation
FLASH memory technology	for easy firmware upgrade operation
Others	lithium back up battery; security operation with key lock; emergency stop red button; machine status indicator lights; near end input / near full output hopper plate sensors for continuous production (ME2000); visual alarm kit for operator alert

RELIABLE & COST EFFECTIVE alternative to stamping and dies.

EASY & FLEXIBLE - Semi-automatic (**ME1000**) or automatic (**ME2000**) loading and unloading has never been easier. Equipped with a unique clamp for plates of most dimensions and materials as well as a large selection of fonts, the METAL EMBOSSERS are designed to meet most requirements in metal plate marking.

CIM has developed various command protocols allowing the **ME1000 / 2000** to easily interface with custom applications.

This data sheet (brochure) is for informational purposes only. CIM USA Inc., makes no warranties, expressed or implied, the summary specifications are subject to change without notice. "The name of our product(s), and product line(s)" are trademarks of MF Group SpA, this is not an offer of sale.

Data subject to change without notice. All stated trademarks belong to their respective owners. ME1000_2000_USA_REV. 02-07-07



MF Group SpA - CIM division

HEADQUARTERS/OFFICES: Loc. Braine, 54/A - 40036 Rioveggio (BO) - Italy - Tel. +39 051 6776 611 - Fax +39 051 6776 612
FACTORY: Via O. Serra, 2 - 40012 Calderara di Reno (BO) - Italy - Tel +39 051 6465 011 - Fax +39 051 6465 012